

Batley Gilbert & Sullivan Society



H.M.S.

PINAFORE

Batley Town Hall

Wednesday 9th to Saturday 12th April 2025



Dewsbury Arts Group

Registered Charity No. 1161083

26 APRIL – 3 MAY 2005

This amateur production of "The Revlon Girl" is presented by arrangement with Concord Theatricals Ltd. on behalf of Samuel French Ltd. www.concordtheatricals.co.uk

The Revlon Girl

★ YOUTH THEATRE ★ SHOWCASE

16 – 18 MAY 2025

GUYS & DOLLS

28 JUNE – 5 JULY 2005

This amateur production is presented by arrangement with Music Theatre International
All authorised performance materials also supplied by MTI www.mtishows.co.uk

SEASON TICKETS AVAILABLE NOW

BOX OFFICE 03336663366

www.ticketsource.co.uk/dewsburyartsgroup

DEWSBURY ARTS GROUP, Lower Peel Steet, Dewsbury, WF13 2ED



A message from the President

A warm welcome to the Society's 76th show: our eighth presentation of 'HMS Pinafore'.

Gilbert and Sullivan's fourth collaboration was their first major success. 'HMS Pinafore' or, 'The Lass That Loved a Sailor', opened on May 25, 1878, at the Opera Comique, where it ran for 571 performances. Today, it remains one of their most popular operas, full of Gilbert's mirth and silliness and Sullivan's rousing choruses.

Gilbert pokes fun at the notion that the First Lord of the Admiralty could be a purely political appointment whose holder need never have been to sea. Sir Joseph Porter has risen from humble beginnings to that high office by political acumen and not only insists that all orders should be qualified by the phrase "If you please", but writes songs to promote "independence of thought and action in the lower branches of the service". We meet the snobbish Captain Corcoran who 'never swears a big, big D' (Well, hardly ever!). He is horrified to find his daughter is in love with a 'common' sailor on board his own ship, although he himself is nurturing a fondness for a poor bumboat woman. How will it be possible for his daughter to be united with the man she loves without marrying beneath her station? Fear not: it all works out in the end. Hip, hip, hoorah!

Unfortunately, Gilbert & Sullivan seems to be an acquired taste that is dwindling in popularity but if only we could encourage younger people to come along and give it a try, they could be pleasantly surprised. As a society we are so lucky to have a wide spread of ages and have welcomed Dom Farrar and Bryan Lam to our male chorus this year. Who knows, we may see them in leading roles next year.

Rehearsals have been very enjoyable under the direction of Richard Buxton and David Hall, our own dynamic duo, and if you enjoy the show as much as we have preparing and performing it, then we should all have a ball!

Once again, our thanks to you, our loyal supporters, for continuing to support the us. Without an audience, the Society would have no future.

I hope you have a lovely time aboard HMS Pinafore.

Stephanie L. Roe—Hon President

The Society is grateful to True to Self Ltd and our President for their sponsorship of *HMS Pinafore*.

The printing of this programme has been very generously sponsored by the Carpenter and his Missus!



Specialists in Innovation

Patents - protect new and clever inventions.

Trade Marks - are signs that are used to associate goods or services with the commercial enterprise from which they originate.

Registered Designs - protect the appearance of an article.

Copyright - protects original works of literature, music, drama, or art against copying.

Contact us for
expert help
with all your
**Intellectual
Property rights**

Producer ~ David Hall



David returns as Producer for our production of *HMS Pinafore*, after the success of our last three productions. He is no stranger to the top team, having also being Musical Director for our productions in 2004, 2008 and 2012, and has been a member of this society since 1999.

Well-known to local audiences, David has also been musical director for Carlinghow Theatre Company and Batley Amateur Thespians. He has appeared in many of their shows, and also in cabarets with the group Songsational.

His Gilbert & Sullivan principal appearances include Ko-Ko & Pish-Tush (*The Mikado*), Captain Corcoran (*HMS Pinafore*), Richard Dauntless (*Ruddigore*) and Frederick (*Pirates*), as well as many other incidental roles such as “waiter”, “drunk”, “passer-by” and “oops”.

David directed Mirfield Choral Society for 17 years and has been Organist and Choirmaster at Longcauseway Church, Dewsbury, since 2003. By day, he teaches singing at Heckmondwike Grammar School and at Silcoates School, Wakefield, and has been a local councillor since 2004.

Our Accompanist ~ Andrew Bedford

Andrew is an extremely talented musician and has accompanied our rehearsals since 2017. He is a real asset to the Society and we are very lucky to benefit from his skills on the keyboard.

In addition to his mastery of the piano, he has, in the past, played viola in our orchestra and so has been an integral part of our entire production, from the very first rehearsal to our final performance.

Thank you, Andrew, for your invaluable contribution to the Society.



This page is sponsored in memory of Jonny, Dan and Steph, all gone before their time but always loved and never forgotten.



Hug Rug®

ECO-FRIENDLY PRODUCTS MADE WITH LOVE

Our beautiful machine washable Hug Rug mats and rugs are made in Yorkshire.

Super absorbent and great at trapping dirt, dust and mud, we have so many great designs to choose from.

To see our full range and many more natural and sustainable home products, visit hugathome.co.uk or call our lovely Hug team on **01484 959 301**

We are grateful to our sponsors for their support.



Harrison Spinks

The True Bedmakers

Family Yorkshire Bedmakers since 1840



**Manufacturing
Guild Mark**

Awarded by The Furniture Makers' Company



HMS Pinafore

Sailors are discovered at work cleaning on board HMS Pinafore. Their work is interrupted by the arrival of Little Buttercup whose basket is crammed with tempting wares. Despite a frivolous exterior she confesses to a worry that is eating its way into her heart. The secret of her remorse is connected with the name of Ralph Rackstraw, an Able Seaman, who has fallen in love with Josephine, daughter of his captain. But she is sought in marriage by Sir Joseph Porter, K.C.B., First Lord of the Admiralty. Josephine confesses her love for Ralph, adding that though she can esteem, reverence and venerate Sir Joseph she cannot love him. A barge is seen approaching and from it steps Sir Joseph, accompanied by a collection of sisters, cousins and aunts. He inspects the crew and declares that all men are equal, apart from him. These sentiments encourage Ralph to propose to Josephine, who rebukes him for raising his eyes to the daughter of his commanding officer. In despair, Ralph decides to take his life, but Josephine intervenes, telling him she loves him before the whole company. They plan to elope that very night, in spite of objections from Ralph's odious mess-mate, Dick Deadeye, who is howled down by the rest of the crew, who all side with Ralph and Josephine.

Sir Joseph tells Captain Corcoran of his disappointment with Josephine, who has not responded favourably to his proposal of marriage. The Captain suggests Sir Joseph's rank may have dazzled her, so Sir Joseph once again tackles Josephine, hoping to further his suit by telling her that in his view a difference of social status is no barrier to love. Little does he know he has pleaded his rival's cause, and Josephine, who was in doubt as to the propriety of eloping with Ralph, now has no qualms. But Deadeye warns of the intended elopement and the Captain is in time to prevent it. He rebukes Josephine for the company she keeps, and, unable to repress his anger, turns on Ralph. Sir Joseph is horrified at the Captain's bad language, and orders him to his cabin in disgrace. Turning to Ralph, he enquires how Captain Corcoran came to forget himself. Ralph admits his love for Josephine, who throws herself into his arms. Sir Joseph is livid with rage and Ralph is led off in custody.

Buttercup intervenes, revealing that years before she had been a baby-farmer. In her charge were a well-born babe and another of humble origin. Inadvertently she mixed them up so Ralph was really named Corcoran and the Captain was Ralph. On hearing this Sir Joseph sends for the two. Ralph enters dressed in the Captain's uniform, and Captain Corcoran as a common sailor. Sir Joseph tells the Captain that after the change in his condition a marriage with his daughter is out of the question. The Captain protests in Sir Joseph's words that "Love levels all ranks" but the First Sea Lord crushingly replies that "It does to a considerable extent, but it does not level them as much as that". Handing Josephine to Ralph, Sir Joseph admonishes him to treat her kindly, and the curtain falls on general rejoicing.

Dramatis Personae

The Rt Hon Sir Joseph Porter, KCB (*First Lord of the Admiralty*)

Malcolm Parkinson

Captain Corcoran (*Commanding HMS Pinafore*)

Stephen Mohun

Ralph Rackstraw (*Able Seaman*)

Leon Waksberg

Dick Deadeye (*Able Seaman*)

Edwin Kirkwood

Bill Bobstay (*The Boatswain's Mate*)

Simon Bray

Bob Beckett (*The Carpenter's Mate*)

Phil Haley

Josephine (*The Captain's Daughter*)

Heather Watson

Hebe (*Sir Joseph's First Cousin*)

Tanya Parsons

Little Buttercup, Mrs Cripps (*a Portsmouth Bumboat Woman*)

Philippa Johnstone

Chorus of Sailors, Sisters, Cousins and Aunts

Fi Baker, Dominic Farrar, Louie Fung, Gayna Goalby, Richard Grigg,
David Hall, Lyndsey Hall, Tracey Hook, Tony Johnson, Bryan Lam,
Daniel Mohun, Elisabeth Mohun, Carol Parkinson, Stephanie Roe,
Claire Rushforth, Melanie Stephen, Amanda Storey.

The ladies and gentlemen of our wonderful orchestra under the
baton of our Musical Director, Richard Buxton:

Violins - Kate Ghent (Leader), Nicky Dick, Richard Wayman, Naomi Sutton,

Viola - Beck Mellings *Cello* - Oona Hall; *Bass* - Jamie Hopkinson

Trumpet - Rebecca Todd; *Trombone* - Ian Graham; *Horn* - Joanne Beaumont

Clarinets - Gary White, Tony Dylak

Flute - Jayne White; *Oboe* - Rachel O'Sullivan

Percussion - Dave Luckett

In Memoriam

The Society remembers, with gratitude, the valuable contributions made to
the Society by the late Graham Haller, Kath Whitwam and Raymond Firth,
all of whom have passed away since our last show.

Musical Numbers

Act I

Overture

- | | |
|---|--|
| I 'We sail the ocean blue' | <i>Chorus of Sailors</i> |
| 2. 'Hail! Men o' war's men | <i>Mrs Cripps</i> |
| 3. "Sir, you are sad" | <i>Mrs Cripps and Captain Corcoran</i> |
| 3a. 'But tell me who's the youth' | <i>Mrs Cripps</i> |
| 4. 'The nightingale sang for the moon's bright ray' | <i>Ralph Rackstraw and chorus</i> |
| 5. 'A maiden fair to see' | <i>Ralph Rackstraw and chorus</i> |
| 6. 'My gallant crew, good morning' | <i>Captain Corcoran and chorus</i> |
| 7. 'Sorry her lot who loves too well' | <i>Josephine</i> |
| 8. 'Over the bright blue sea' | <i>Chorus of ladies</i> |
| 9. 'Sir Joseph's barge is seen' | <i>Chorus of sailors</i> |
| 10. 'Now give three cheers' | <i>Sir Joseph, Capt Corcoran, Cousin Hebe and chorus</i> |
| 11. 'When I was a lad' | <i>Sir Joseph Porter and chorus</i> |
| 12. 'For I hold that on the seas' | <i>Sir Joseph, Cousin Hebe and chorus</i> |
| 13. 'A British Tar' | <i>Ralph, Bill Bobstay, Bob Beckett</i> |
| 14. 'Refrain, audacious tar' | <i>Ralph and Josephine</i> |
| 15. Finale Act I 'Can I survive this overbearing' | |

Entr'acte

Act II

- | | |
|---|---|
| 16. 'Fair moon to thee I sing' | <i>Captain Corcoran</i> |
| 17. 'Things are seldom what they seem' | <i>Captain Corcoran and Mrs Cripps</i> |
| 18. 'The hours creep on apace' | <i>Josephine</i> |
| 19. 'Never mind the why and wherefore' | <i>Sir Joseph, Capt. Corcoran & Josephine</i> |
| 20. 'Kind Captain, I've important information' | <i>Capt Corcoran and Dick Deadeye</i> |
| 21. 'Carefully on tip-toe stealing' | <i>Chorus</i> |
| 22. 'Farewell my own' | <i>Octet and chorus</i> |
| 23. 'A many years ago' | <i>Mrs Cripps and chorus</i> |
| 24. Finale Act II 'Oh joy! Oh rapture unforeseen' | |



Sir Joseph Porter KCB - Malcolm Parkinson

When Malcolm was a lad he caught a germ. Well, not so much a germ as the acting bug. Learning songs at his mother's knee and other low joints he last played Porter at Batley over 40 years ago. He is now of an age where he doesn't need make up to look old. He wishes to convey, officially, his appreciation to Sir Hugh Jarse for sponsoring his costume. Indeed he is so grateful for his support he will always wear it.

Captain Corcoran - Stephen Mohun

Steve was introduced to Gilbert & Sullivan at school. Some years later, he joined the chorus with two local societies. After his career took him to London, he fell out of the habit of performing, and made his return to the stage in Batley's successful production of *Iolanthe* in 2023, after a twenty-seven year hiatus. The role of Captain Corcoran will be Steve's second principal role with Batley, following his appearance as Sir Despard Murgatroyd in last year's 75th Anniversary production of *Ruddigore*. We asked Steve: "Do you ever become nervous about performing?" "Never!" he replied. "What *never*?" our reporter countered. To which he responded: "Well ... hardly ever."



Ralph Rackstraw - Leon Waksberg

Leon first started singing when he joined Bradford University Gilbert & Sullivan Society in 2001, and took part in *The Mikado*. He has since performed with all the Gilbert & Sullivan societies in West Yorkshire at different times, and has played all of the tenor roles. Leon also plays bass and sings backing vocals with Leeds-based progressive metal band 'Nithered'. He can next be seen in *Tales Of Hoffmann* with York Opera, at York Theatre Royal June 25th-28th.



Dick Deadeye - Edwin Kirkwood

In his fifth show with the Society, Edwin is enjoying playing the “baddie” as Dick Deadeye. He last took part in *HMS Pinafore* aged 12, when he escaped being in the ladies’ chorus only by dint of being in the older half of the group involved!

He has been an active member of Morley Amateur Operatic Society for over 30 years, in both their musicals and pantomimes and is their current President. As well as performing in shows with a number of other societies or supporting backstage, he enjoys singing in his church choir and round a Scout campfire.



Bill Bobstay - Simon Bray

Simon joined Batley Gilbert & Sullivan Society in eight years ago, having previously been a member of Leeds Gilbert & Sullivan, which he joined as a fresh-faced youth of 40 in 2005.

In 2023, he took on his first principal role, playing Sergeant Willis in *Iolanthe*.

Having never performed in *HMS Pinafore* before, a personal favourite, he is very much looking forward to being in it, and hopes that the audience enjoys the show as much as he has enjoyed taking on the role of Bill Bobstay.



Bob Beckett - Philip Haley

Phil joined the Society in 1973, his first show being *HMS Pinafore*. He continued performing until 1986. Whilst living abroad he was associated with the Calpe Gilbert & Sullivan Society, based on the Costa Blanca, playing the role of Ko-Ko in *The Mikado*. He was also a member of two rock bands whilst in Spain!

He co-wrote a production of *Cinderella* for the Cross Bank Youth Group with fellow member Stephanie Roe. He rejoined Batley in 2020 and became a member of Halifax Gilbert & Sullivan two years later.



All the best for show week from Mel, Patrick & Sam Stephen

Josephine - Heather Watson



Heather joins the cast for her third performance with the Society, having enjoyed her time as Phyllis in *Iolanthe* and Rose Maybud in *Ruddigore*.

She trained in Classical Singing, Opera and Performance at Leeds College of Music, where she appeared in several operas including Mozart's *Magic Flute* and Purcell's *Dido and Aeneas*. Since graduating she regularly performs with the Northern Opera Group and has turned her hand to musical theatre, having played Anna in *The King and I* and Chava in *Fiddler on the Roof*. Offstage, Heather works as a member of the safeguarding team in a secondary school and as a trustee of a children's charity. In her spare time, she continues to grow her indoor jungle with her cat, who avidly despises her fiancé.

Cousin Hebe - Tanya Parsons

Tanya has taken part in five shows with Batley Gilbert & Sullivan Society. This is her second principal part with the Society having played Fiametta in the 2017 production of *The Gondoliers*. She is very much looking forward to playing the role of haughty Hebe and will try to keep a straight face performing alongside Malcolm Parkinson's Sir Joseph Porter whilst he performs his antics. Tanya has been performing for over thirty years with societies in the north and south of the country. As well as performing with Batley, Tanya is also a member of Mirfield Choral Society and sings with the Bluebird Singers. Outside of work Tanya is busy renovating a house and loves spending time in Spain.



Little Buttercup - Philippa Johnstone

Philippa has been involved in amateur dramatics since a very early age and has enjoyed being a chorus member or principal in pantomimes and musicals with Morley Amateurs, Headingley Amateurs, Southend Operatic Society and Dewsbury Collegians. She has also been a member of both Mirfield and Halifax Choral Societies.

She thoroughly enjoys being part of Batley Gilbert & Sullivan Society. This is her third year with the society, after playing the part of a fairy in *Iolanthe*, a bridesmaid in *Ruddigore* and now an old bum boat woman in *HMS Pinafore*!





PRESENTS

MONTY PYTHON'S SPAMALOT™

A new musical *lovingly* ripped off from the motion picture
MONTY PYTHON and the Holy Grail

September 2025

Batley Town Hall

Thursday 18th - Saturday 20th @ 7:15pm

Sunday 21st @ 2:15pm

Tickets: £14 Full, £12 Concessions

Book now : Carlinghowtickets@gmail.com

or online: Kirklees.gov.uk/townhalls

Book and Lyrics by ERIC IDLE

Music by JOHN DU PREZ and ERIC IDLE

Chorus of Sisters, Cousins and Aunts



Fiona Baker



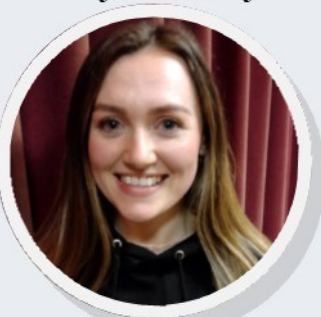
Gayna Goalby



Lyndsey Hall



Tracey Hook



Elisabeth Mohun



Carol Parkinson



Stephanie Roe



Claire Rushforth



Melanie Stephen



Amanda Storey

Chorus of Sailors



Dominic Farrar



Louie Fung



Richard Grigg



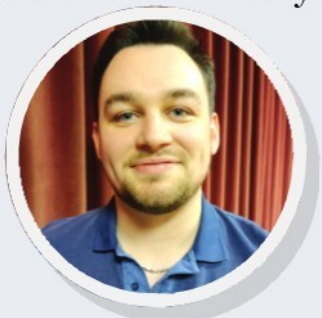
David Hall



Tony Johnson



Brian Lam



Daniel Mohun

Why not come and join us?

We rehearse every Wednesday at 7.30pm at St Andrew's Church
Hall, Purlwell, Batley.

For further details visit our illustrated website

www.batleygands.org.uk

or contact Lyndsey Hall

Tel: 07835 163795

Musical Director ~ Richard Buxton



Richard began singing Gilbert & Sullivan in his mid-thirties, playing a succession of middle-aged and elderly juvenile leads before a perceptive director finally allowed him to act his age.

In *HMS Pinafore* he has played Sir Joseph Porter and Ralph Rackstraw twice each (in Halifax and Huddersfield), and Dick Deadeye in Batley's last production in 2015. Since 1982 he has worked through most of the Gilbert & Sullivan canon several times in various roles, playing all three parts in *Cox and Box* (though not in the same production). Batley have called upon him from time to time when they were short of an Old Bald Bloke, appearing for them in *The Gondoliers*, *The Sorcerer* twice, *Utopia Limited*, *Trial by Jury* and *HMS Pinafore*.

He took up the conductor's baton in Halifax in 2009, when he was Treasurer, and they couldn't afford to pay anyone and found to his delight that the orchestra appeared able to follow his beat. Since then, he has also directed eleven shows for Halifax, enjoying the absence of artistic friction between director and conductor.

Outside Gilbert and Sullivan Richard has enjoyed playing a variety of psychopaths and dysfunctional husbands in Stephen Sondheim musicals for Dewsbury Arts Group. His last appearance there was in the chorus of *The Producers* last year, appearing variously as a downtrodden accountant with wonky glasses, a Bavarian peasant in lederhosen, and a stage designer in a ginger wig. He sings with Halifax Choral Society and has been a regular supporter of Opera North since their opening night in 1978.

Richard came to Batley three years' ago to conduct *The Mikado*, following it with *Iolanthe* and *Ruddigore* last year. He is delighted to have been asked back to work with so many friends both on stage and in the orchestra pit.

**Batley Gilbert & Sullivan
Society is proud to be a
member of the National
Operatic & Dramatic Society.**

noda.org.uk

NODA
For every stage



Rosehill Polymers



WORLD-CLASS MATERIAL SCIENCE
& MANUFACTURING EXCELLENCE

We are grateful to our sponsors for their support.

JURATEK

Juratek have been delivering high-quality aftermarket braking components and reliable customer service for over 30 years.

Starting life as a supplier for commercial vehicles, today they're a leading brand for brake discs, pads, calipers and more for passenger vehicles throughout the UK and Europe.

Tel: 01302 727312

Web: www.juratek.com

The cast of our first production of HMS Pinafore in 1954



Stephanie L. Roe BSc, Dip CBT, Registered MBACP

Provision of therapeutic counselling and clinical supervision for trainee and qualified counsellors.

Do you find yourself pleasing others more than yourself?

Would you like to be more self-confident?

Do you feel invisible at times? Then, counselling could certainly help you.

I can provide counselling for the following:

Depression & Anxiety, Low Self Esteem, Bereavement & Loss, Trauma and PTSD,
Cognitive Behavioural Therapy, Abuse / Domestic Violence, Couple / Relationship issues,
Neurodivergence (Autism, ADHD, etc.).

Tel: 07810 447183

Email: info@truetoselfcounselling.co.uk

Website: www.truetoselfcounselling.co.uk

bacp | professional
collective mark standards
authority
accredited register
Registered Member **94728**
MBACP

Acknowledgements

| | |
|-------------------------------|--|
| Producer/Director | David Hall |
| Musical Director | Richard Buxton |
| Accompanist | Andrew Bedford |
| Set Design | Howard Goalby |
| Scenic Artist | Chris Hall |
| Set Construction and Painting | Howard Goalby, Chris Hall and the team |
| Stage Manager | Howard Goalby |
| Lighting | LX Lighting |
| Properties | Fay Church and Gayna Goalby |
| Prompter | Richard Buxton |
| Wardrobe | Lyndsey Hall |
| Costumes | Elizabeth Stagewear |
| Make Up | Debbie Moores and the team |
| Bookings Manager | Stephanie Roe |
| House Manager | Margaret Hanson |
| Programme Designer and Editor | Robert Thurman |
| Musical Score | James Newby Music |
| Safety Officer | Stephanie Roe |
| Safeguarding Officer | Gayna Goalby |

Society Officials

President: Stephanie Roe, **Secretary:** Lyndsey Hall. **Treasurer:** Robert Thurman
Executive Committee: Fi Baker, Simon Bra, Gayna Goalby, Philip Haley,
Stephen Mohun, Debbie Moores, Rob Moores, Carol Parkinson.

Honorary Life Members of the Society

Mr K Horner, Mrs C Parkinson, Mrs S L Roe, Mrs S Stopford,
Mr C R Thurman, Mr G Weston.

NODA Long Service Medal Holders

Mrs M Hanson, Mrs Tracey Hook, Mr K Horner, Mr E Kirkwood,
Mrs D Moores, Mrs C Parkinson, Mr M G Parkinson, Mrs S Stopford,
Mrs S L Roe, Mr C J Sowerby, Mr C R Thurman,
Mrs K Thurman, Mr I Townend.

Invited Guests

The Mayoress of Kirklees and her Consort: Nosheen Dad and Shiraz Khan.
Representatives from Heckmondwike Players, Halifax Gilbert & Sullivan
Society, Batley Amateur Thespian Society, Carlinghow Theatre Company,
and Dewsbury Arts Group.
NODA District and Regional Representatives - Kirstie Turnbull and Les Smith
Members of the Auditions Panel and Guests: Jane Griffin, Nancy Finnegan,
John Tattersall. Ian Townend (reader-in).

CDR Projects

Yorkshire Based Joinery &
Carpentry Specialists.



07847 761 002



CDRProjects.co.uk

CDR Projects are
pleased to sponsor
**Batley Gilbert &
Sullivan Society's**
production of
HMS Pinafore.



- Residential & Business Projects • Bespoke Furniture
- Custom Doors, Wardrobes & Staircases • General Joinery
- Workshop Manufactured Products